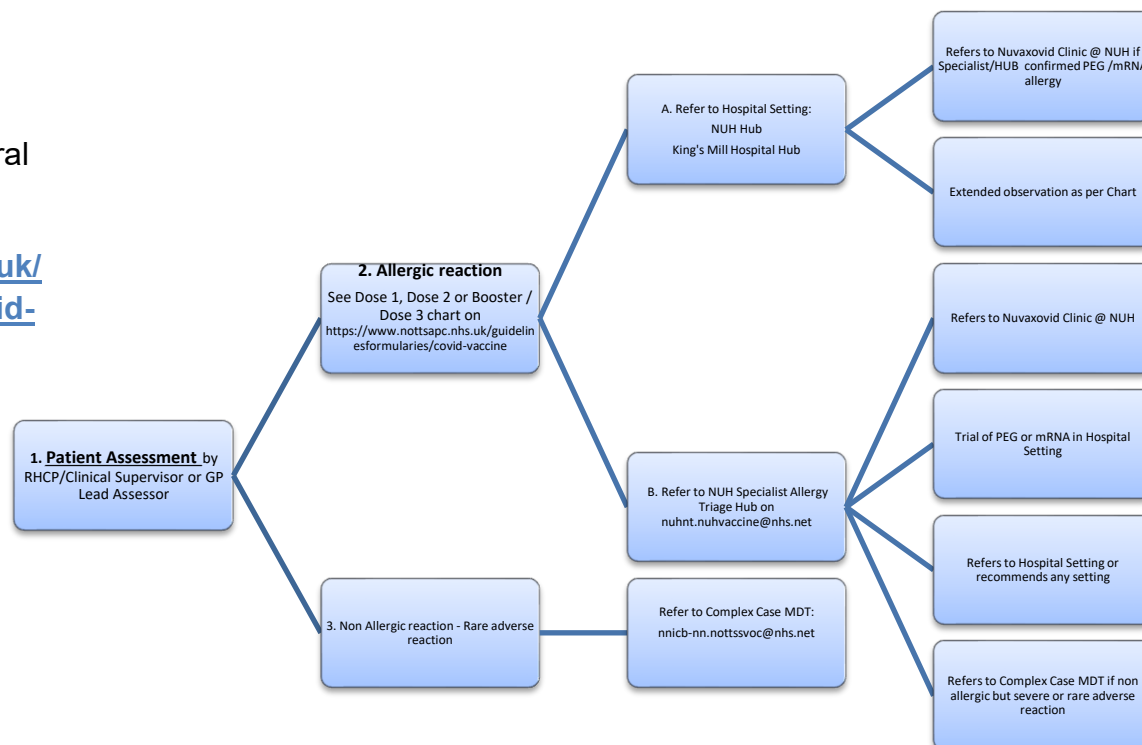


## Nuvaxovid, Allergy, Severe Adverse Reactions & Complex Cases Pathways

The referral form can be completed by a Clinical Supervisor, registered Pharmacist or GP. The referral form for ALL referrals is at:

<https://www.nottsapc.nhs.uk/guidelinesformularies/covid-vaccine/>



### Patient assessment

RHCP Assessor, Clinical Supervisor or GP Lead should fully assess any history of

- Allergy
- Adverse reaction to a previous covid-19 vaccine, including allergic, non-allergy, local, rare or severe reactions.

The flow charts on the Nottinghamshire APC website provide local guidance on pathways in support of Chapter 14a of the Green Book. <https://www.nottsapc.nhs.uk/guidelinesformularies/covid-vaccine/>

This has been significantly updated since January 2021.

## **Referral Form:**

The referral form for all referrals is on the Nottinghamshire APC website

<https://www.nottsapc.nhs.uk/guidelinesformularies/covid-vaccine/>

Send Referrals for

- **Allergy** to [nuhnt.nuhvaccine@nhs.net](mailto:nuhnt.nuhvaccine@nhs.net)
- **Non-Allergy, Rare and severe adverse reactions/ Complex Cases** to [nnicb-nn.nottssvoc@nhs.net](mailto:nnicb-nn.nottssvoc@nhs.net)
- **Hospital Settings** to
  - King's Mill Hospital
  - NUH to [nuhvaccine@nuh.nhs.uk](mailto:nuhvaccine@nuh.nhs.uk)

## **Allergy referrals**

Patients cannot self-refer nor book directly. They can be referred by their pharmacist, clinical supervisor at a vaccination clinic or a GP.

If an RHCP assessor is unsure whether a reaction is an allergic reaction or a local or systemic reaction, seek advice from a senior experienced clinician, e.g., GP, or refer to the NUH specialist allergy hub. In cases of doubt, please refer.

Please include as much clinical detail about the reaction and any other brief history within the referral form as possible.

Guidance on allergy, allergic reactions and covid-19 vaccines has been significantly updated over the last 2 years. The current guidance is contained within Chapter 14a of the Green Book and supplemented by local pathway guidance available on the Nottinghamshire APC website. <https://www.nottsapc.nhs.uk/guidelinesformularies/covid-vaccine/>

## **Nuvaxovid**

This may be an alternative vaccine for some individuals who have a confirmed contraindication to an mRNA Covid-19 vaccine, including Specialist confirmed PEG allergy of Covid vaccine anaphylaxis. It is available on referral by the NUH specialist allergy hub, a registered pharmacist or GP using the pathways outlined above. It is only provided in the dedicated Nuvaxovid vaccination clinic in the hospital setting at NUH

Some patients may previously have received vaccination with AstraZeneca based on a history of allergic reactions, or as a precaution. AstraZeneca is no longer routinely supplied. These individuals should be **fully reassessed** and, if required, referred to specialist allergy services or a hospital hub setting. The reassessment should be in line with current guidance set out in Chapter 14a of the Green Book and supplemented by the local pathway charts on the Nottinghamshire APC website.

If a patient has been fully assessed by the specialist allergy services previously and there is documented evidence of a confirmed recommendation for an alternative to an mRNA vaccine, they can be referred by their GP, pharmacist, or a clinical supervisor to the dedicated NUH hospital setting for consideration of Nuvaxovid.

.

## **Hospital Settings**

Some patients require a hospital setting for their vaccination due to their previous history. Hospital settings provide facilities for extended waiting, appropriate clinical monitoring and have full resuscitation facilities available. Please refer to Chapter 14a of the Green Book and the local pathway charts for circumstances where this is required. In cases of doubt please refer.

Both hospital hubs provide facilities for vaccination within a hospital setting. Please refer patients with full clinical details to:

King's Mill Hospital Hub: (via SVOC [nnicb-nn.nottssvoc@nhs.net](mailto:nnicb-nn.nottssvoc@nhs.net) )

NUH: [nuhvaccine@nuh.nhs.uk](mailto:nuhvaccine@nuh.nhs.uk)

## **Rare, Serious Adverse Reactions and Complex Cases**

If an RHCP assessor is unsure whether a reaction is a rare or serious adverse reaction, please seek additional advice from the programme's VC GP Lead or refer with as much clinical detail as possible to the Complex Case MDT. Please use the Referral form on the Nottinghamshire APC website and send to SVOC ([nnicb-nn.nottssvoc@nhs.net](mailto:nnicb-nn.nottssvoc@nhs.net)) marked for Complex Case MDT.

Sometimes it is unclear whether the clinical symptoms are related to the covid-19 vaccine. Normally such reactions will have been reported and fully investigated by the patient's GP with referral for specialist investigation and advice as required.

If GPs have queries relating to an individual patient's clinical suitability for further vaccination and most appropriate vaccine, advice can be sought from the Complex Cases MDT.

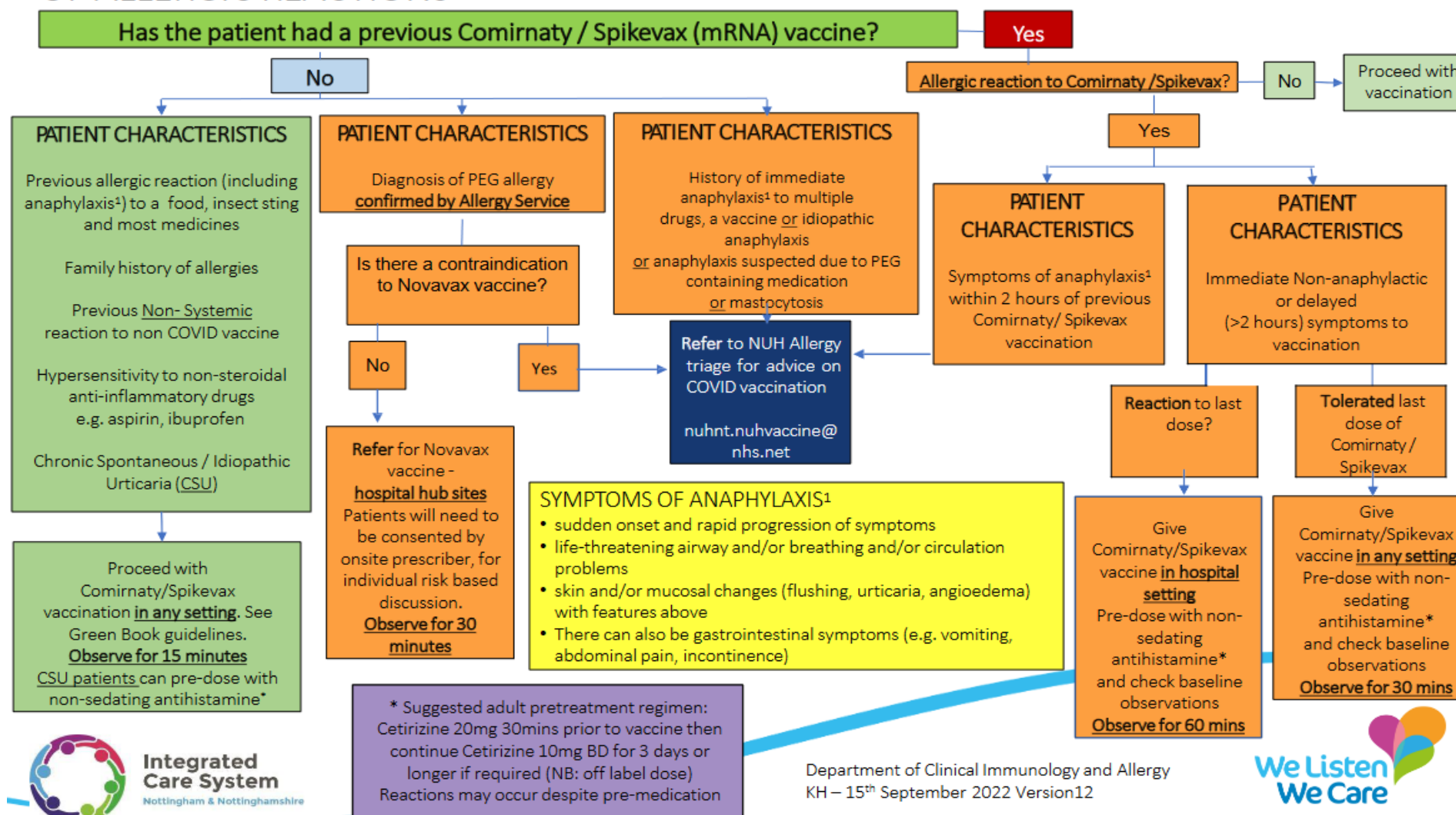
Some Rare or serious adverse reactions include:

- Pericarditis / Myocarditis
- Guillain Barre Syndrome
- Transverse myelitis
- Capillary Leak Syndrome
- Idiopathic Thrombocytopenia
- Bell's palsy

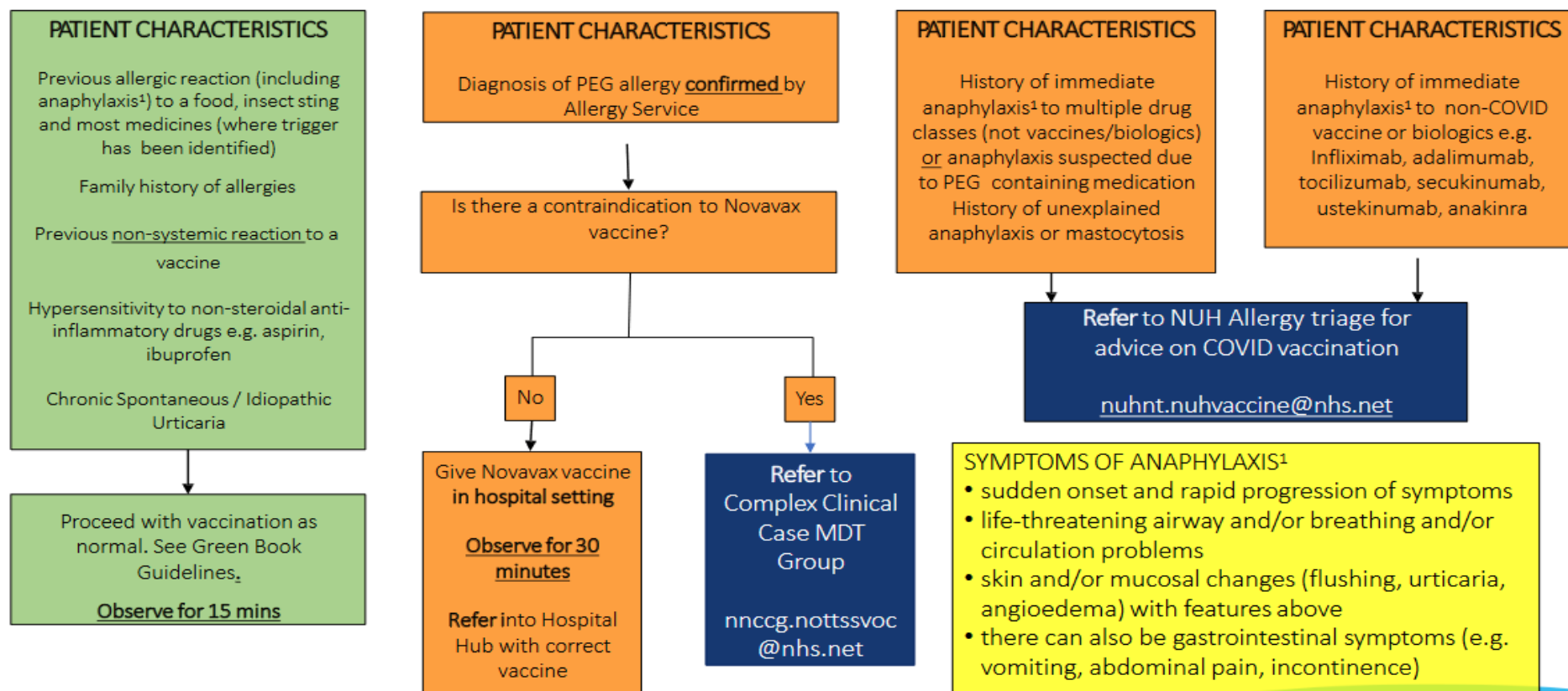
This is not an exhaustive list so if an RHCP assessor, or the patient, is unsure about the clinical symptoms they are describing or whether to proceed, please seek further advice from the VC GP Lead or the patient's own GP.

Some patients may present with clinical symptoms unrelated to the vaccine, but which require further assessment. Assessors and GP Leads should provide and document any guidance given and by whom (grade/role/initial not name) within Pinnacle, under their own log in Pinnacle details.

# THIRD PRIMARY or any BOOSTER DOSE COVID VACCINATION - GUIDANCE FOR MANAGING ADULT PATIENTS WHO HAVE A HISTORY OF ALLERGIC REACTIONS

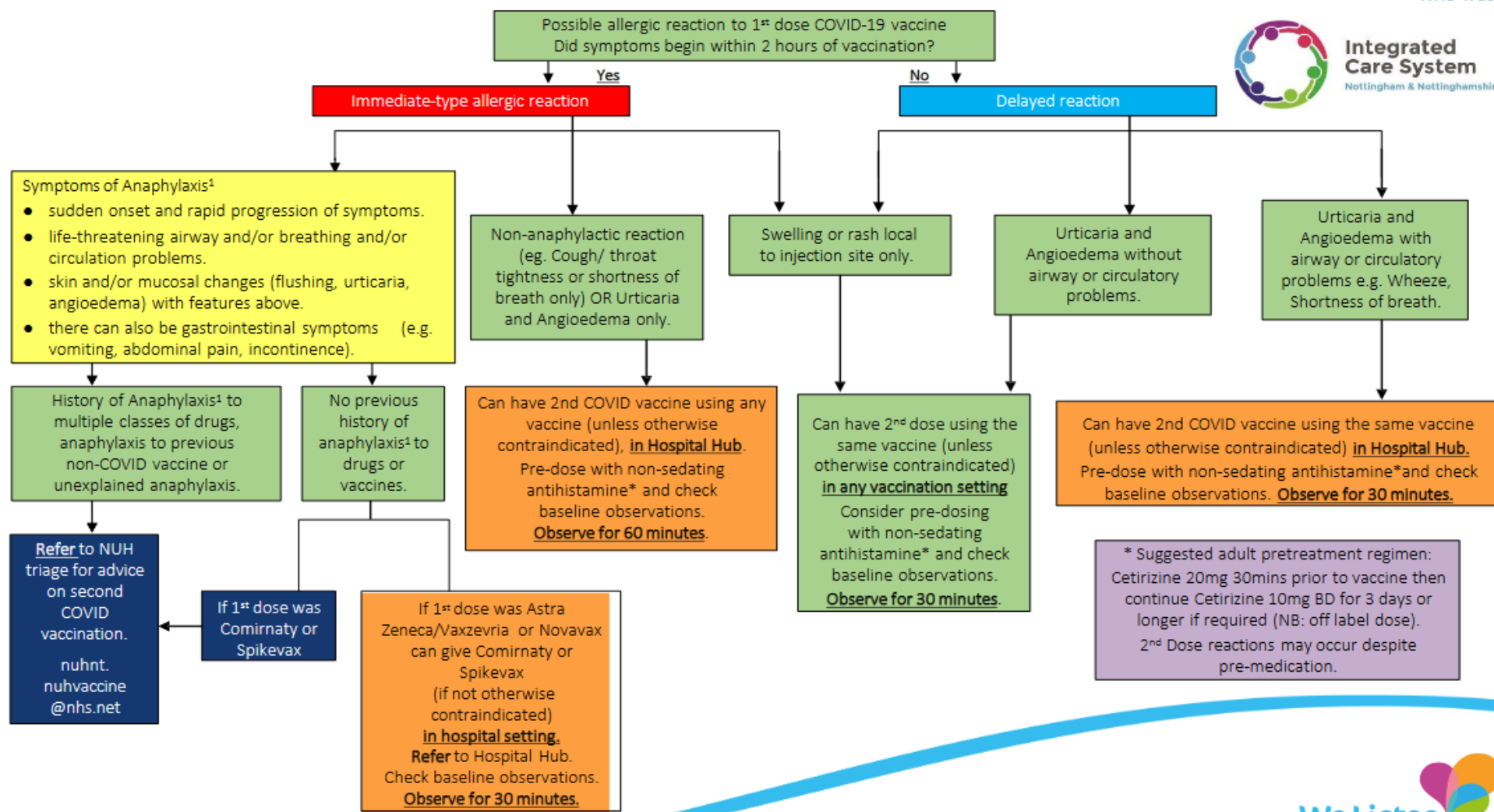


## FIRST DOSE COVID VACCINATION - GUIDANCE FOR MANAGING ADULT PATIENTS WHO HAVE A HISTORY OF ALLERGIC REACTIONS





## SECOND DOSE COVID VACCINATION - GUIDANCE FOR MANAGING ADULT PATIENTS WHO HAVE A HISTORY OF ALLERGIC REACTIONS TO THE FIRST DOSE OF COVID-19 VACCINE



Department of Clinical Immunology and Allergy  
KH – 15<sup>th</sup> September 2022 Version 11