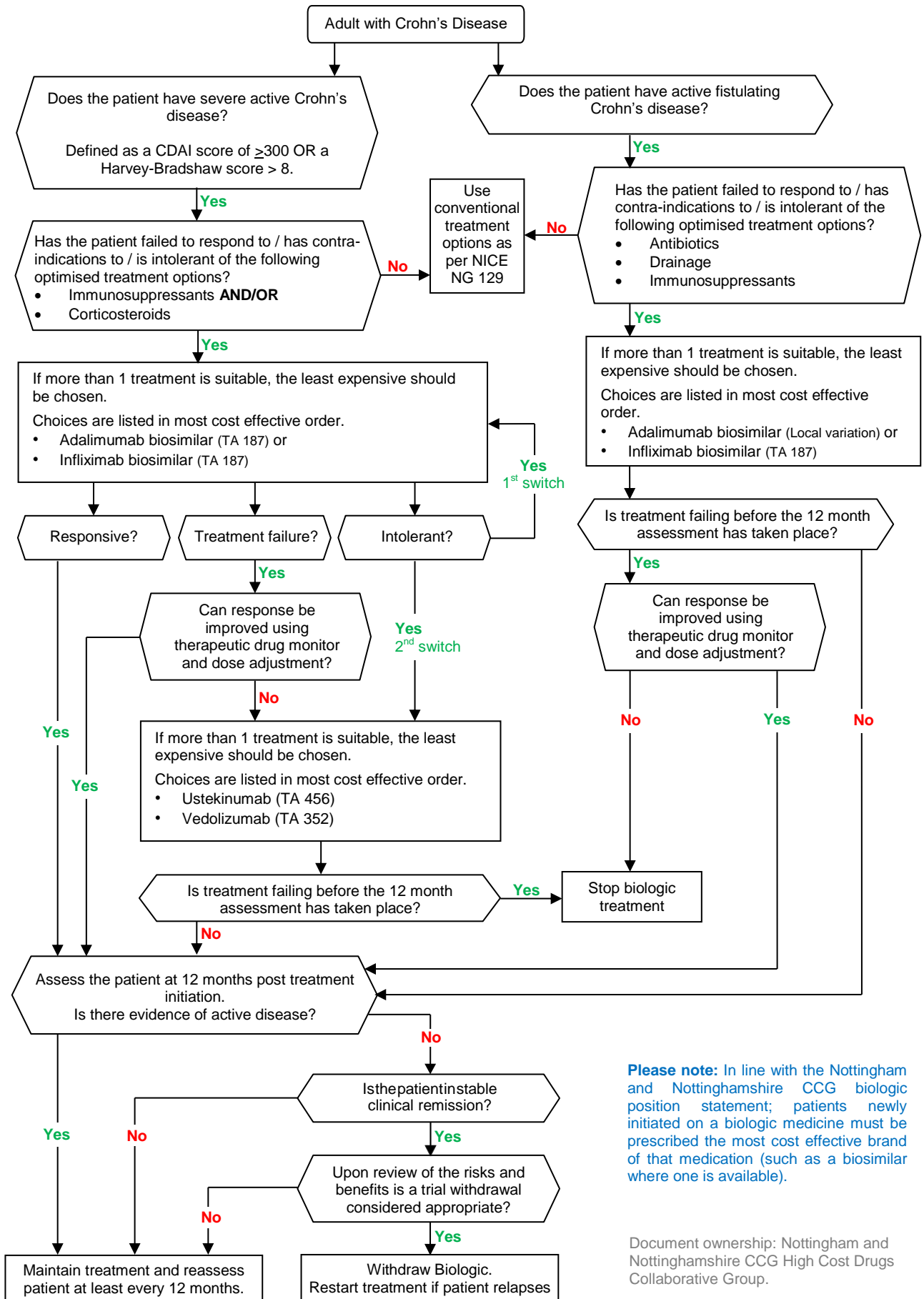


Nottinghamshire commissioning guidance for the treatment of Crohn's Disease

This algorithm is a tool to aid the implementation of NICE guidance for high cost medicines used in the treatment of severe active Crohn's disease and active fistulising Crohn's disease.



Please note: In line with the Nottingham and Nottinghamshire CCG biologic position statement; patients newly initiated on a biologic medicine must be prescribed the most cost effective brand of that medication (such as a biosimilar where one is available).

Document ownership: Nottingham and Nottinghamshire CCG High Cost Drugs Collaborative Group.

Released: July 2020
Review: July 2021