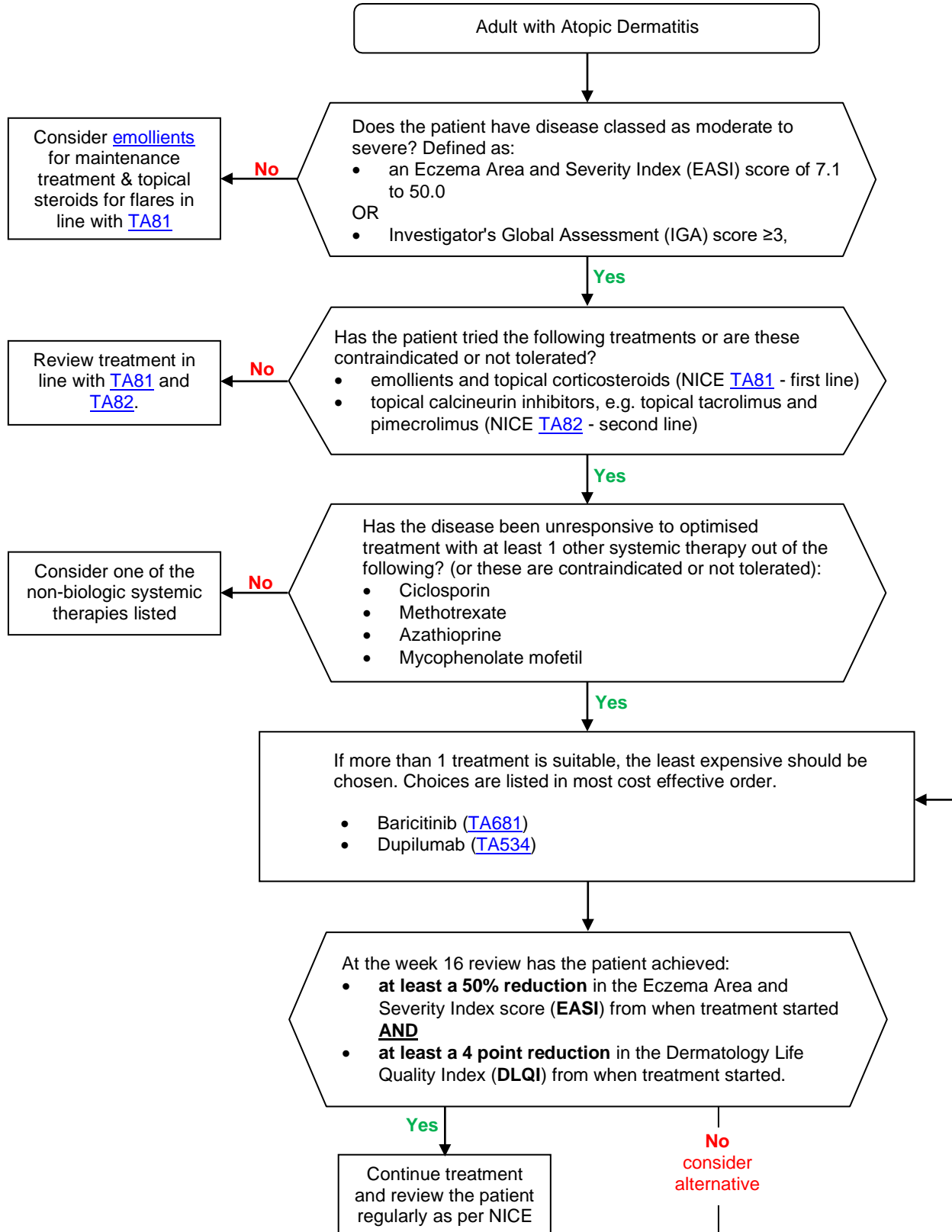


## Nottinghamshire commissioning guidance for the treatment of Atopic Dermatitis

This algorithm is a tool to aid the implementation of NICE guidance for high cost medicines used in the treatment of Eczema in adults.



**Please note:** In line with the Nottingham and Nottinghamshire CCG biologic position statement; patients newly initiated on a biologic medicine should be prescribed the most cost effective brand of that medication (such as a biosimilar where one is available).